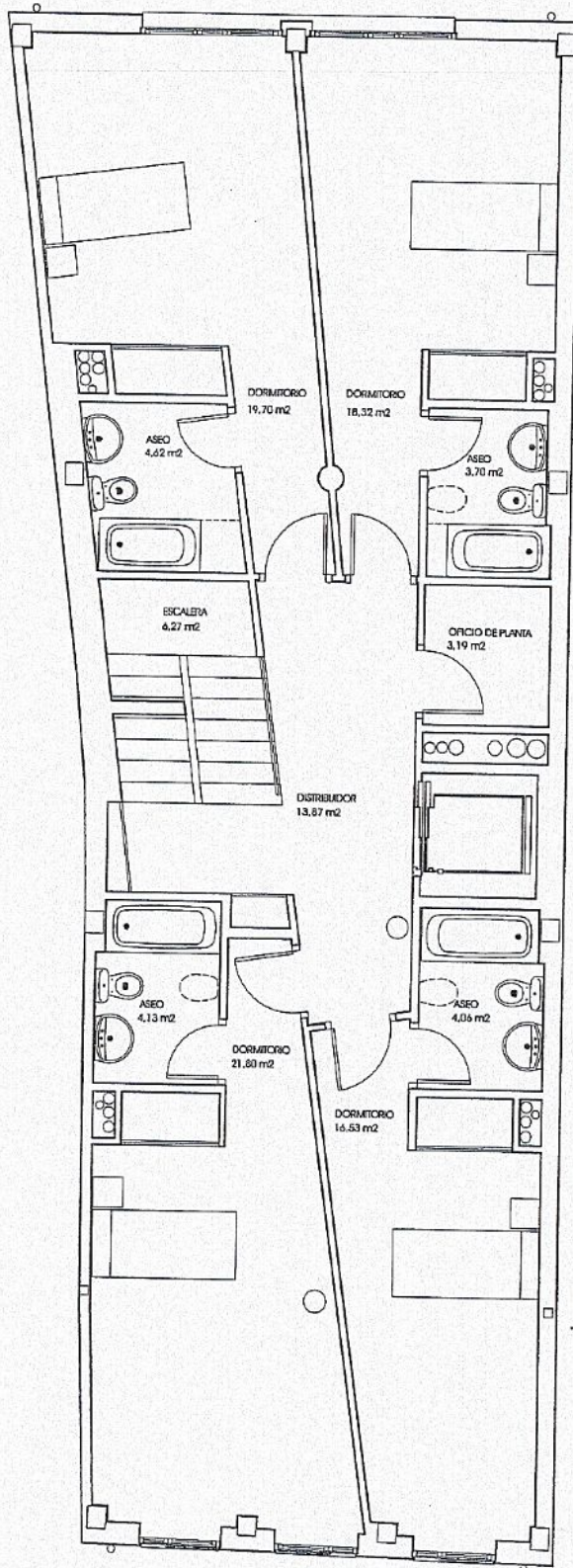


457



Handwritten signature

Handwritten signature

Large handwritten scribbles and a circular stamp.

Handwritten signature

PLANTAS 1ª Y 2ª
 SUPERFICIE ÚTIL : 116,19 m²
 SUPERFICIE CONSTRUIDA : 140,77 m²

ARQUITECTOS COSME CUENCA Y JORGE REVA, S.A.S.

Handwritten signature